



- Size DN15–50
- Kvs value 0.6–39
- Rangeability 100:1

#### Function

The valve is closed when the stem is in its lowest position.

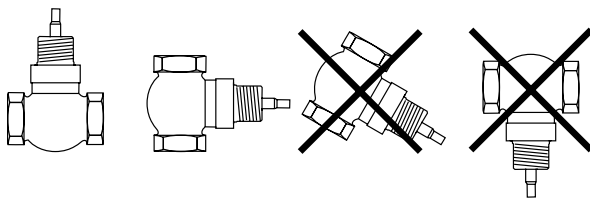
#### Actuator

The valve is pressure balanced and can therefore handle high differential pressure with low force. This means that an actuator with low force can be used.

BTV is intended to be used together with actuators of the type RVA5...

#### Installation

The valve should be mounted according to the flow direction arrows on the valve.



# BTV

## Female threaded 2-way valve

Pressure balanced (from DN20-50, not DN15) valve intended for control of hot, cold or glycol-mixed water.

- No leakage
- Pressure balanced (smaller actuators can be used)
- Temperature range -5...+140°C
- Pressure rating PN16

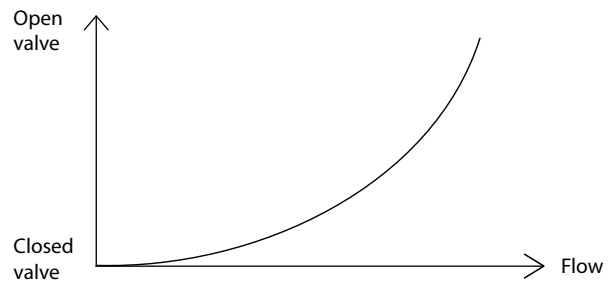
#### Material

BTV has body and top in brass, stem and plug in stainless steel.

The valve has a soft seating made out of carbon-filled teflon between plug and seat, which makes it completely tight. It has O-rings made of EPDM.

#### Flow characteristics

The flow type is equal percentage according to the figure below.



## Models

Valve	Connection	Kvs	Max. diff. pressure	Valve	Connection	Kvs	Max. diff. pressure
BTV15-0,6	DN15	0.6	1.6 MPa	BTV25-6,3	DN25	6.3	1.6 MPa
BTV15-1,0	DN15	1.0	1.6 MPa	BTV25-10	DN25	10	1.6 MPa
BTV15-1,6	DN15	1.6	1.6 MPa	BTV32-16	DN32	16	1.6 MPa
BTV15-2,5	DN15	2.5	1.6 MPa	BTV40-27	DN40	27	1.6 MPa
BTV20-3,9	DN20	3.9	1.6 MPa	BTV50-39	DN50	39	1.6 MPa

## Technical data

Pressure rating	PN16
Connection	Female threaded
Flow characteristics	Equal percentage
Rangeability	100:1
Stroke	20 mm
Media	Hot, cold or glycol-mixed water (max. 50 % glycol)
Leakage	None
Temperature range	-5...+140°C
Thread	The valves have female threaded connections according to ISO 228/1

## Material

Body	Brass CZ 121
Plug	Stainless steel 304S15
Seat	Brass CZ 121
Stem	Stainless steel 303S31
Plug seal	PTFE (25% carbon)
O-rings	EPDM

## Dimensions and pressure drop diagram

Measurements in mm

DN:	d	A	b	H	B	c	NV
15	G1/2"	70	11	90	62	47	30
20	G3/4"	75	13	90	62	47	36
25	G1"	90	14	104	76	56	42
32	G1 1/4"	105	17	104	64	44	52
40	G1 1/2"	120	18	120	67	50	58
50	G2"	145	20	124	77	60	70

